



THE FIXTS GROUP®

Energy & Industrial Solutions

...So much more than a Manufacturer of LED Light Fixtures...

We provide illumination solutions that allows end-users to reduce their ROI life cycle, impacts on Safety and increase Efficiencies of their Operations

So much more than a Manufacturer of LED Light Fixtures...

FROM DESIGN
TO DELIVERY
WE ARE FOCUS

100%

SAFETY
QUALITY
&
OPERATIONAL
EFFICIENCIES

FIXTS BUSINESS PORTFOLIO

Manufacturing
&
OEM Network Support

TFG Strategic Sourcing & Project Management

Industrial & Commercial LED Light
Fixture Manufacturer

Automated and Non-Automated
Inspections

Project Management

Energy and O&G LED Light Fixture
Manufacturer

Electrical Capital and Spares Sourcing

Consulting Services

Aluminum Poles
Manufacturer

O&G and Maritime Spares & Equipment
Sourcing

Project Execution Coordination

Customized LED Light Fixture & Lighting
Layout Project

Commissioning

Key Strengths and Abilities

- Documented QA / QC Processes: PPAP, DFMEA, OQC, IQC, AQC, IPQC, FGQC, Supplier QA/QC, etc.
- Certification Specialists: UL, ETL, FCC, DLC, Energy Star, NEMA, NSF, etc. *
- Hazardous Location Certs: UL1598/A, UL8750, UL924, NEMA4X, UL Marine Grade, 65° C ambient temperature, CAN/CSA C22.2, NEC Class I/II/III, Div I/II, IP69K, Zone 1&2, IECEx, etc. *



*Utilizes both in-house staff & strategic third-party services

By the numbers

- 750

Thousand square feet of advanced manufacturing floor space across four company-owned facilities. Canada, USA, Mexico and China
- 500

Full-time employees worldwide, and counting
- 50

Full-time designers & engineers
- 30

Countries to which we sell and ship goods
- 12

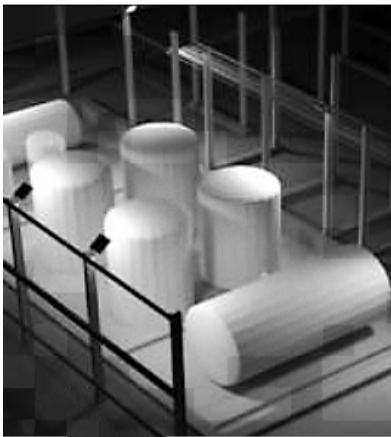
Fortune 100 OEM customers
- 6

Assembly and Distribution Centers (DC) to serve our USA customers
- 1

Vertically integrated company proven to competitively design, engineer, produce, distribute and commissioning your Projects



Illumination Project Support



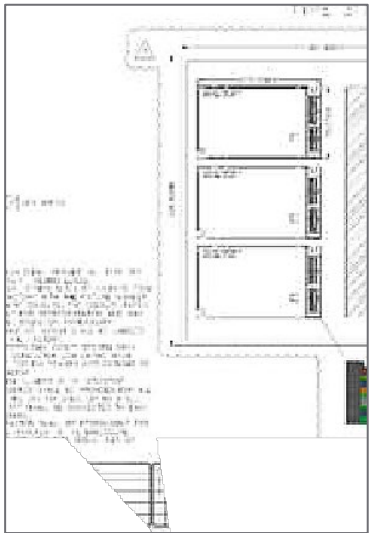
Lighting Audits & Layouts

- We offers lighting audits and consults on-site.
- We create 3D lighting layout reports of buildings, vessels, vehicles and complete site designs free of charge.



Luminaire Customization

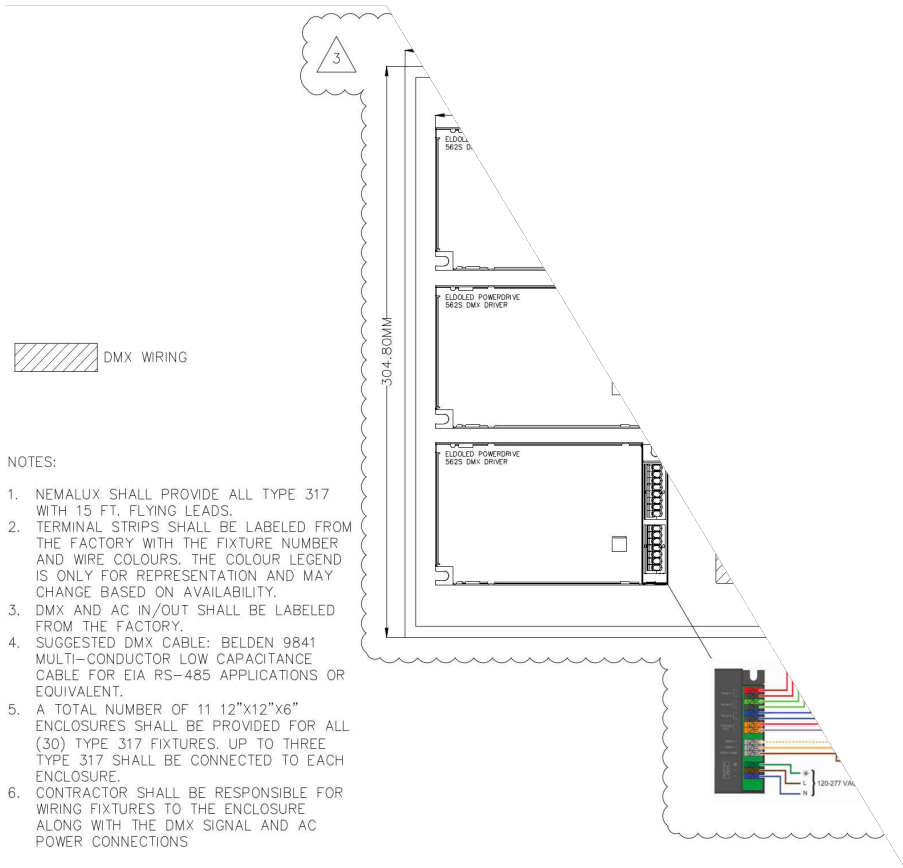
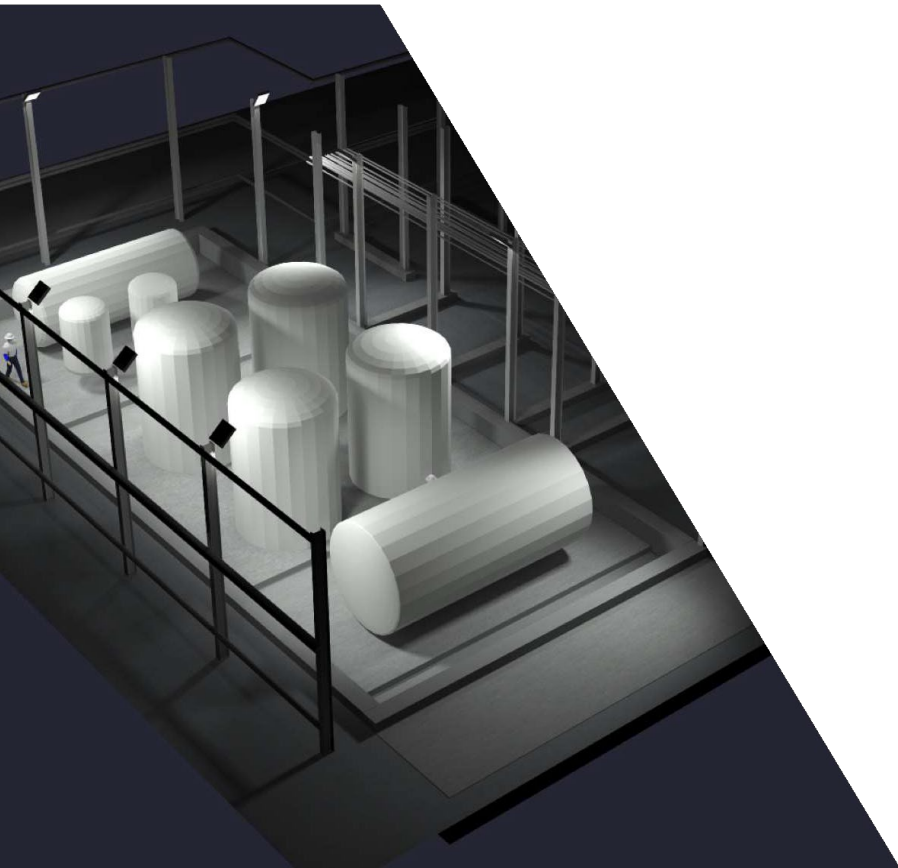
- Our in-house team of industrial designers can design custom luminaires and brackets.



Project Documentation

- Clear communication is maintained throughout the design process in Nemalux vendor documentation.

Commissioning  Implementation support and field Assessment during execution is always available.



TFG Strategic Sourcing & Project Management



6 KEY APPROACHES

- 1 TFG Team can offer a Sustainable value, more efficiently, shifting focus from Tactical to Strategic
- 2 Always Safety First at The Best Total Cost of Ownership
- 3 Support to reduce cost base, replicating Value Created and meet and/or exceed your current goals
- 4 On-House Strategic Sourcing / Procurement, specializing in MRO and critical path goods,
- 5 Strategic Alliance with a Best-In-Class electrical supplies in the Industrial, O&G and Maritime Sectors
- 6 Assessment and in-situ Inspection that helps to eliminate Time & Cost savings with immediately data turnaround

6 KEY STEPS

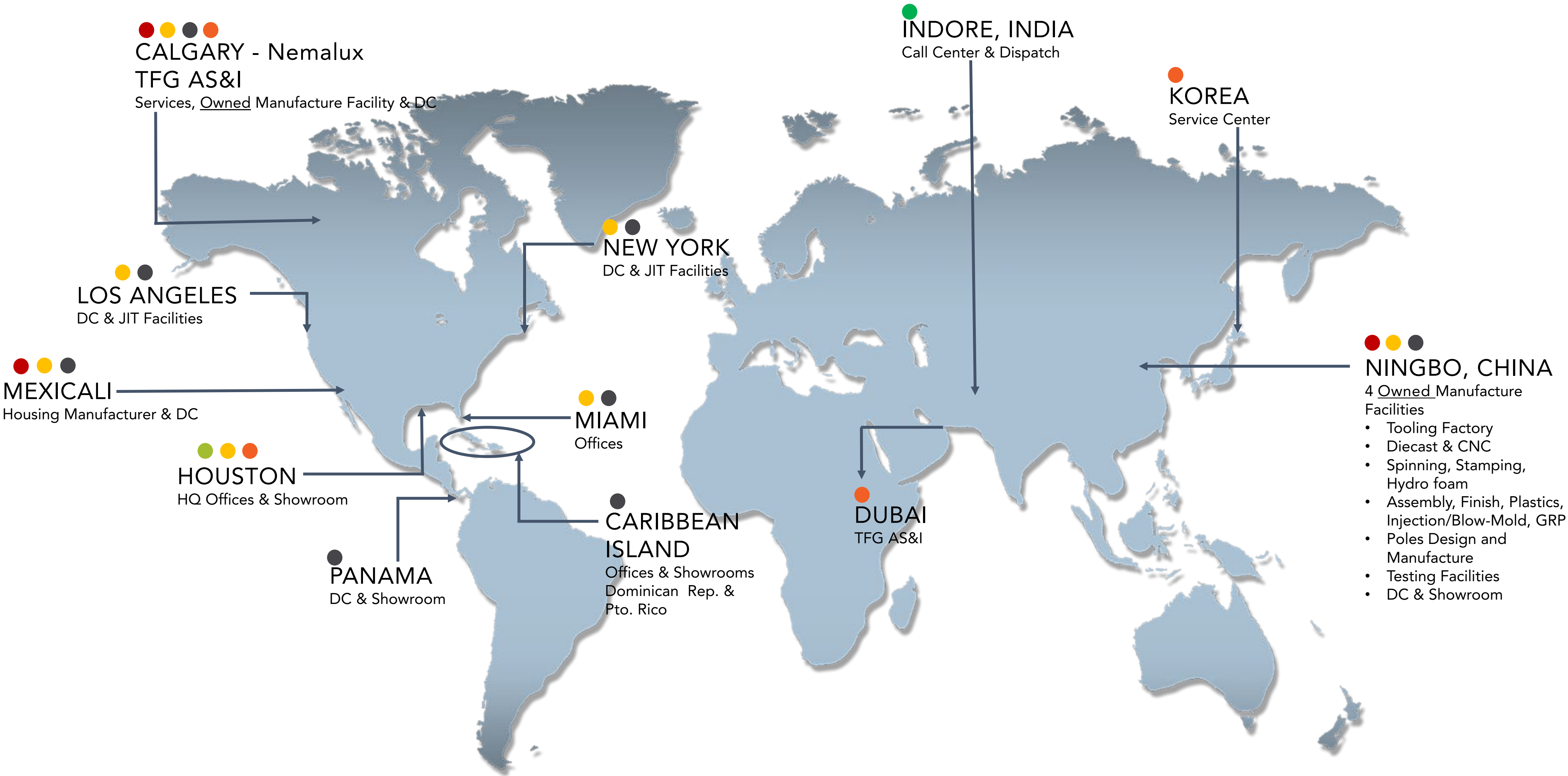


Key Clients



Our Footprint

- Head Quarters
- Manufactures
- Just In Time Facilities
- Offices, DC & Showrooms
- Call Center & Dispatch
- Electrical Ing. Service Team



Our Value Proposition

- ✓ Safer, Reliable and Innovative Solutions
- ✓ Over 40% TCO Reduction from conventional applications
- ✓ Innovation that impacts in Downtime and Increase Utilization

Our Desire Outcome



- Schedule a meetings with Technical & Commercial Organization to unlock additional Values
- Introduce innovative solutions that impacts directly on Safety, Environment, Operational Improvement and Cost



THE FIXTS GROUP®

Energy & Industrial Solutions

ADVANTAGES – CASE STUDIES – NEMALUX FIXTS

LED Light Fixtures Advantages

SAFETY

- Drops Compliant (3 levels of securement)
- All hardware meets or exceeds most Domestic & international Standards
- Fully even lighting and reduced shadows
- Focused optics prevent glare of the personnel during operations
- Improves Visibility
- Decreased Work Errors that may end on Incidents / Accidents
- Cools Down confined spaces (i.e. Engine Rooms). Emit Negligible Heat

ENVIRONMENTALLY FRIENDLY

- IDA Dark Sky Compliance. Approved for low glare and full cutoff to minimize light pollution and reduce environmental impacts of lighting on wildlife and local ecosystems
- Up to 80% less greenhouse gases (CO2 reduction)
- Long life, less Waste Management Reduction, as compared to MH/HPS
- Fewer bulbs need to be produced, packaged, used and ultimately disposed.
- No Toxic Waste
- Reduce noise pollution from the environment compared to Fluorescent Tubes and MH/HPS bulbs
- Free of any chemical which can be hazardous for environment or public health

OPERATIONAL EFFICIENT

- No manpower required to operate/maintain within 100K hrs. of utilization
- Increased efficiency during night operations (clear visibility)
- Color quality improvement represents operational improvements
- Energy savings also directly correlates with carbon dioxide (CO2) emission reductions
- Reduce on Fuel load
- A field serviceable Fixture, individual components can be ordered and replaced on site by a certified electrician under the local electrical code rather than returning the complete fixture for maintenance

TECHNICAL VIABLE

- Designed to API 4F standards
- Compliance with all international regulations
- DLC v4.4 Listed high efficiency and performance
- UL1598/A, UL8750, UL924, NEMA4X, UL
- ABS, Marine Grade, CAN/CSA C22.2, NEC
- Class I/II/III, Div I/II, IP69K, Zone 1&2, IECEX, etc.

COST EFFICIENT

- Decreased fuel consumption
- Longevity which translates to overall total cost of ownership
- Typically a 400-watt MH/HPS/HID light fixture can be replaced with an LED fixture between 100-150 Watts.
- Between 40%-80% impact on Energy Consumption Cost

Case Studies



THE FIXTS GROUP®
Energy & Industrial Solutions



Oil Well Command Centers

Industry: Oil & Gas

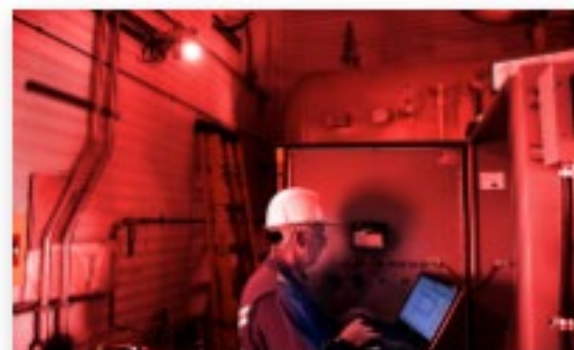
Equipment controller cabs require exceptional visibility for both the inside controls as well as exterior activity. With changing light levels during 24/7 operation, cab workers needed light adjustment to achieve optimal monitoring. As outside light reduces with the setting sun, the interior of the cab becomes the brighter light source, limiting the primary field of vision to just within the cab. Learn more about how Nematlux created solutions for this challenge.



NASA Ames Research Center

Industry: Aerospace

One of the more challenging applications for lighting systems is the illumination of confined spaces. Such a challenge was presented to the Nematlux team by members of the NASA Ames Research Center. Built in 1956, the Unitary Plan Wind Tunnel at NASA Ames Research Center in Moffett Field, California is an impressive example of engineering and design. As part of the continuous improvement program, the facility has been testing a variety of LED systems to increase existing light levels, decrease maintenance cost and improve visibility for a wide range of cameras and sensors. Find out how Nematlux was able to help with this project.



Photobiology

Industry: Research & Development

Photobiology is the study of light and its effect on living things. There has been a great deal of study on photobiology in the area of agriculture. However, its application in the oil & gas environment is a new field. It is a niche market for those companies like Nematlux that have the expertise to engineer lighting systems that enhance operations and safety in the energy sector.



Industrial Compressor Site

Industry: Oil & Gas

The feasibility of using LED light fixtures at this oil and gas site was investigated, with a consideration given to several factors including energy savings, low maintenance costs, comparable capital costs and the safety of low voltage DC.



Aircraft Hangar, Calgary International Airport

Industry: Aerospace

An infrastructure team needed to install outdoor lighting to their maintenance hangar's exterior. Light colour temperature had to be specific as well have versatile angle control so lighting glare would not interfere with other planes on the nearby runway. A light fixture next to a potential vibration area (door motor) could also prove a hindrance to bulb longevity. Outdoor fixture location exposed to a wide temperature range of -40C (-40F) in the winter to peak summer temperatures exceeding 30C (86F). Find out how Nematlux provided solutions for this challenge!

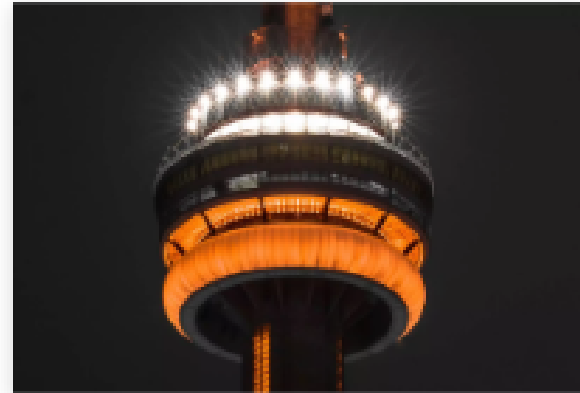


Lighting Mobile Rig Support & Maintenance Trailers

Industry: Oil & Gas

The client, a recognized leader in mobile industrial equipment, designs and produce trailers that are specialized for use in the oil & gas industry. Efficient, bright, rugged lighting is crucial for such equipment to ensure workplace safety and dependable operation in remote locations and under a range of climate conditions.

Case Studies



Nemalux Product Spotlight – The CN Tower

Industry: Industrial

Industrial and extreme locations can be found right in the middle of your city! This time the extreme site was 1,815 feet high where freezing rainstorms and hail wreak havoc. Wind speeds are often 100 km per hour, and an object can reach up to 195 km per hour, falling from this height.



Hazardous Location vs. Industrial Grade Luminaire

Industry: Industrial

Choosing Industrial Grade products that consist of suitable components and are designed to withstand harsh environmental challenges is key. With so many vendors in the marketplace, there is a bewildering array of luminaires available and selecting a suitable supplier can quickly become a tedious process.



ENFORM

Industry: Industrial

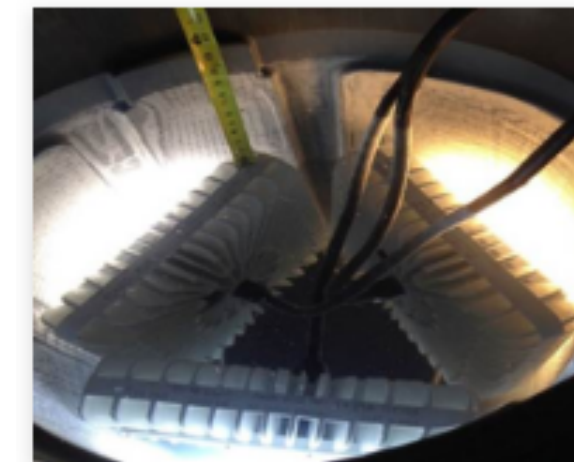
At mid-day, the sun supplies 10,000 to 25,000 lux of light to an oil & gas site. Since oil & gas sites operate on a 24-hour basis, safe operations depend on area lighting during the hours of darkness. For six years Nemalux has been providing leading-edge LED lighting systems for the energy sector. In compliance with ENFORM's recently published Lease Lighting Guideline, Nemalux's lighting systems enhance operability and safety when natural sunlight is not available.



Nuclear Power Plant Boiler

Industry: Nuclear

At one of the largest nuclear facilities in the world located in southwestern Ontario, Canada, they have eight generating units produce over 6000 MW electricity. The first units have been operational since 1976. Facility maintenance is critical to the long-term operation of the generating station.



Nemalux Research – Encapsulation and Immersion Testing

Industry: Industrial

Industrial LED Research Case Study: Nemalux LED luminaire was designed and tested to carry out IP68 ratings for permanent submersion at depths of up to 4m safely.



Customized Luminaire created for the City of Calgary Transit Priority Program

Industry: Industrial

The City required a bus light indicator that could be implemented easily in the field with minimal time and labor investment. Previously the indicator lights were made on-site and modifications to signal cabinets were required to make them work.

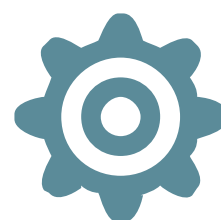
LED Light Fixtures Main Application



Oil & Gas



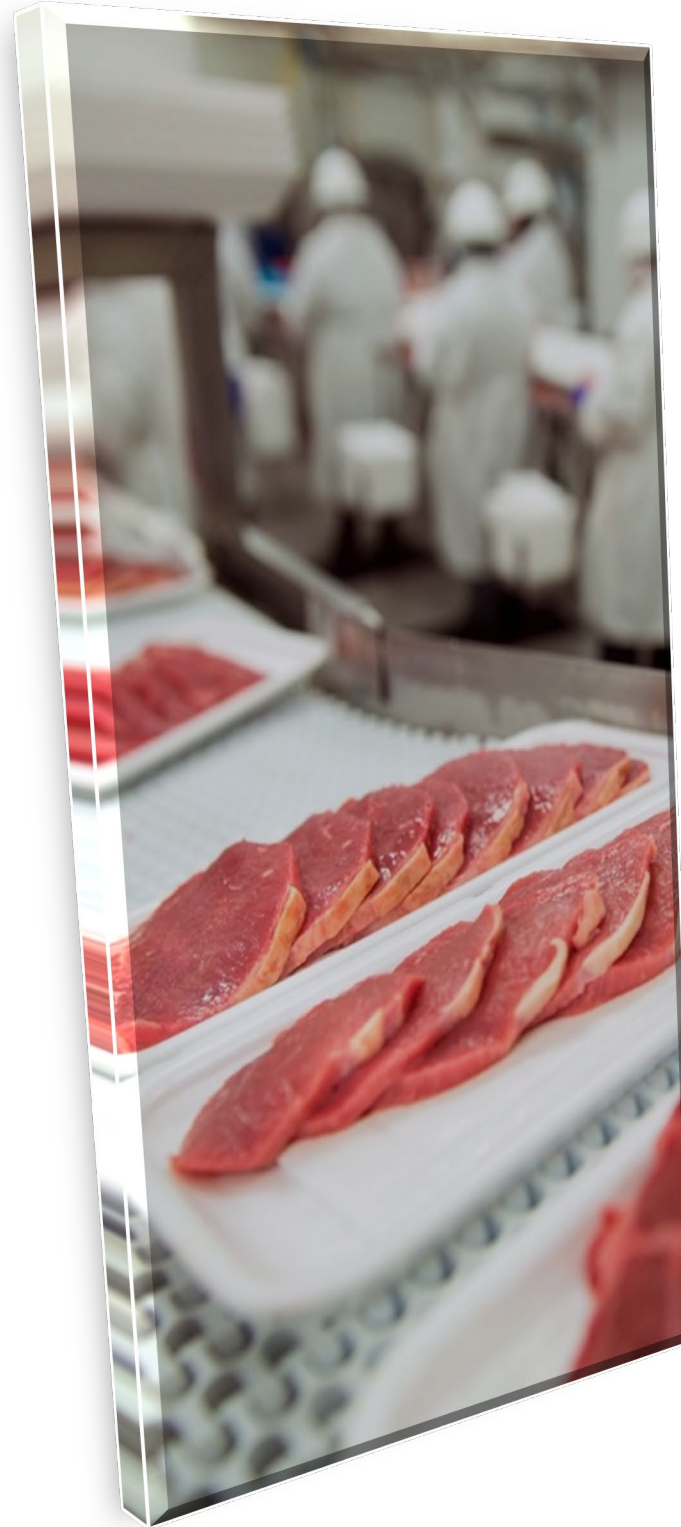
Marine & Transport



General Residential,
Commercial & Industrial



Food Processing



Mining





- Hazardous Location
- Explosion Proof
- 120-277VAC
- IP66 Rated
- 24VDC
- General Location
- 120-277 & 347-480VAC
- IP66/67 Rated
- IDA Certified
- Optics



CLICK TO DOWNLOAD OUR CATALOGS



GS Series (DC)



GS Series (AC)



BL Series



NL Series



MR Series



XR Series



AR Series



CANLED Series



XCANLED (DC)



XCANLED (AC)



EXC Series



ZLM Series



LS Series (Light Stringer)



RS Series



SL Series



BFLED Lighting Strip